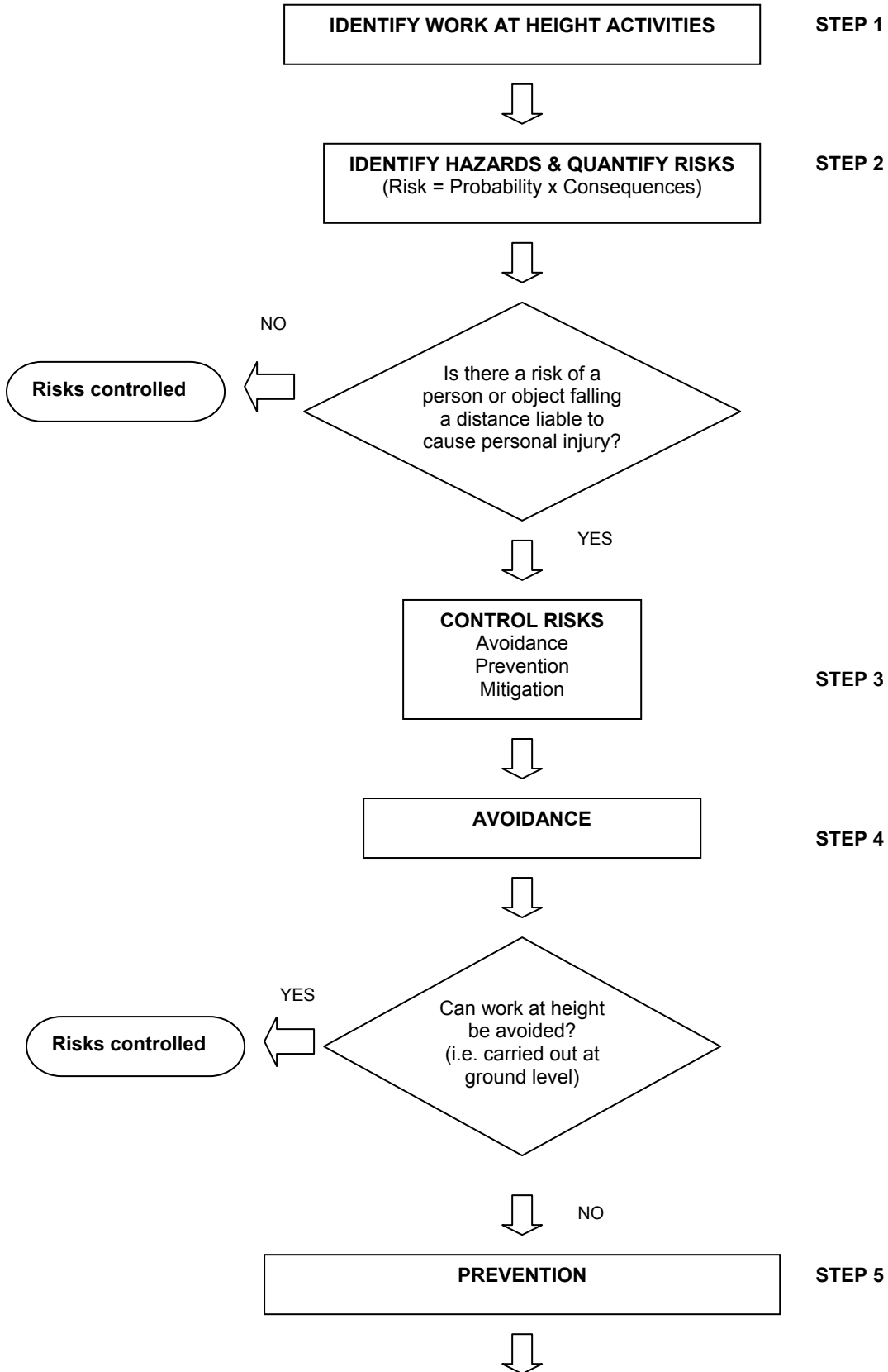


APPENDIX 4

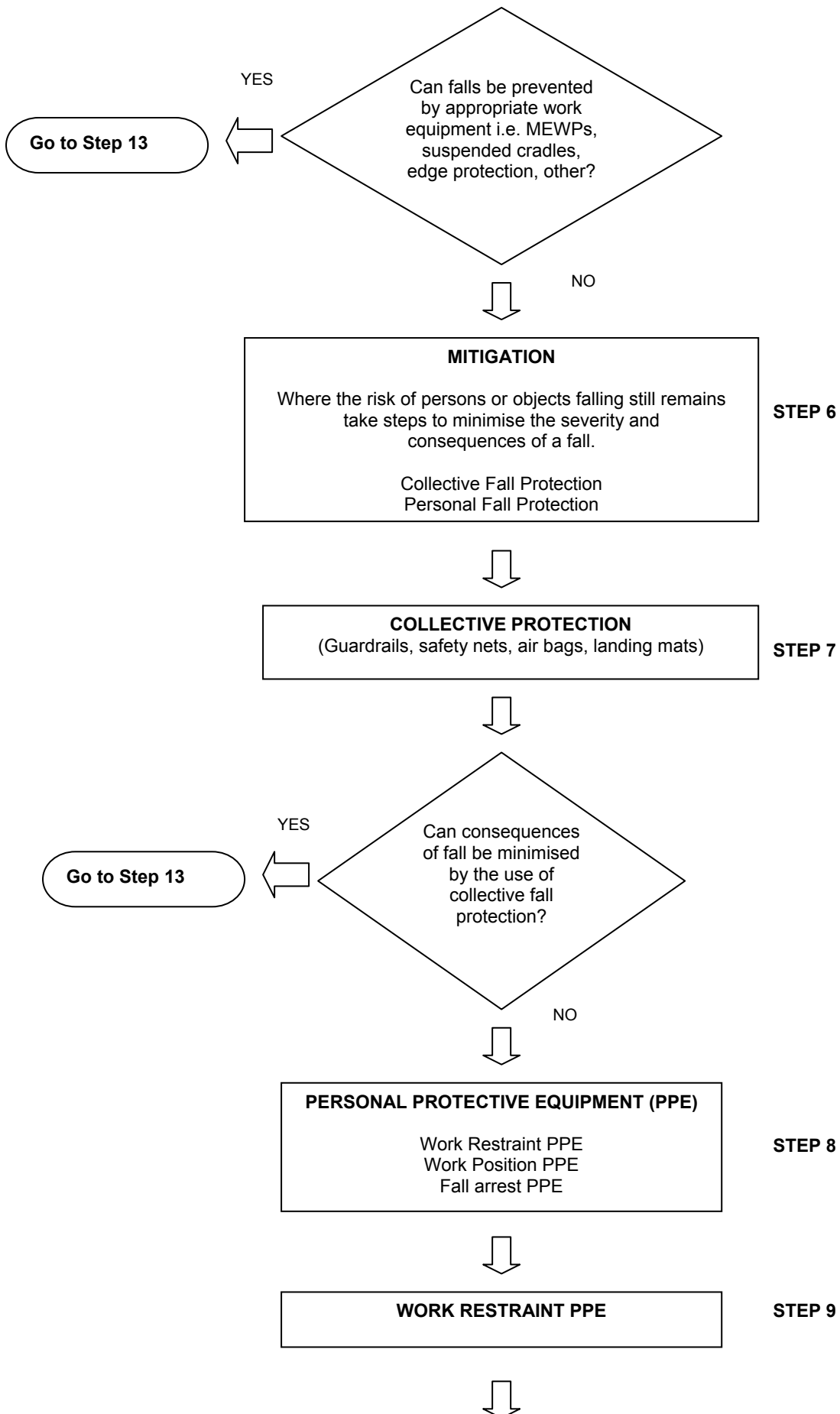
WORKING AT HEIGHTS – RISK ASSESSMENT PROCESS

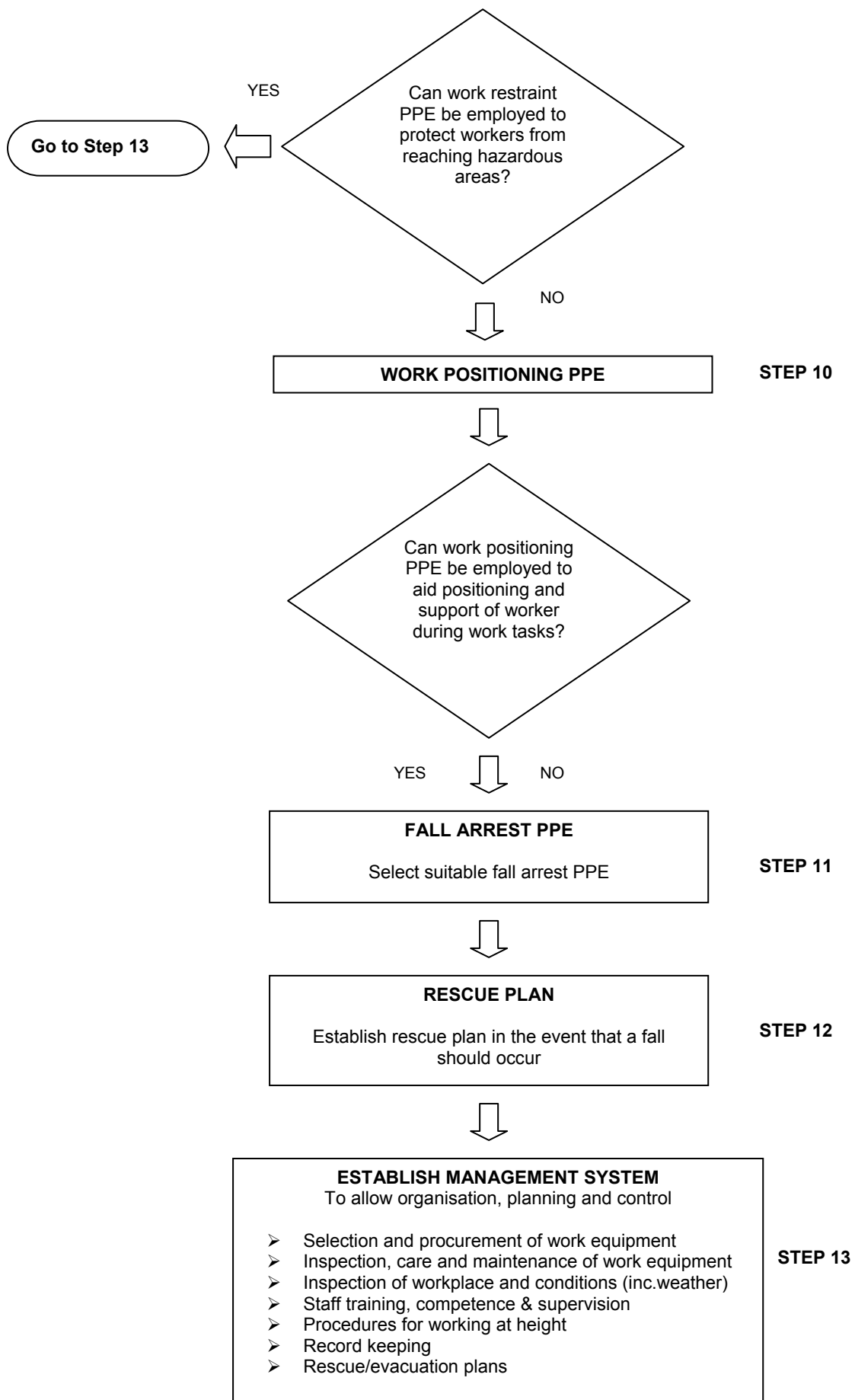
Working at Heights – Risk Assessment Process

This flow chart illustrates the general risk assessment process adopting the safe working at heights hierarchy approach of Avoidance, Prevention and Mitigation.



Continued/





YES

Go to Step 13

Can work restraint PPE be employed to protect workers from reaching hazardous areas?

NO

WORK POSITIONING PPE

STEP 10

Can work positioning PPE be employed to aid positioning and support of worker during work tasks?

YES

NO

FALL ARREST PPE

Select suitable fall arrest PPE

STEP 11

RESCUE PLAN

Establish rescue plan in the event that a fall should occur

STEP 12

ESTABLISH MANAGEMENT SYSTEM

To allow organisation, planning and control

STEP 13

- Selection and procurement of work equipment
- Inspection, care and maintenance of work equipment
- Inspection of workplace and conditions (inc. weather)
- Staff training, competence & supervision
- Procedures for working at height
- Record keeping
- Rescue/evacuation plans